

SAN JUAN DE SANTA BARBARA

Santa Barbara, Heredia



LOT

500M²



REFERENCE NUMBER

HV229

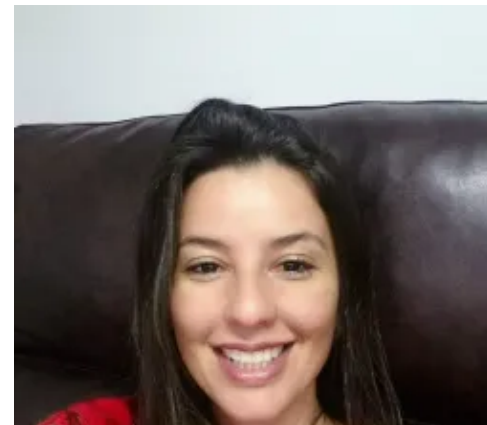
PRICE: USD 175,000

SUMMARY

Terreno comercial frente carretera principal en San Juan de Santa Barbara de Heredia . Area de 500 metros esquinero do nde tiene 12.30 metros de Frente y 31 metros de fondo 80% de cobertura...

AMENITIES

- Elevated Ground
- Fields
- Gardens
- Paved Street
- Visitors Parking
- Playground
- Spa/health club
- Bicycle Parking
- Forest or woods
- Gated community
- Quiet location
- Amusement Park
- Public gardens
- Tourist attractions
- Boat dock/slip
- Garage/parking
- Parking
- Ski property
- Outdoor activities
- Shops
- And more...



HAZEL VEGA

KW del Este

Curribadat, San José - Heredia, Heredia

85334902

hazel.vega@kwcostarica.com

<https://www.costaricarealestatemls.com/agent/5d0a8e8223d1bc2bc184435f/>

LANGUAGES I SPEAK:

Spanish

English

